

# **Challenges** and **Opportunities** of **Climate Change in Wisconsin**

Ken Potter

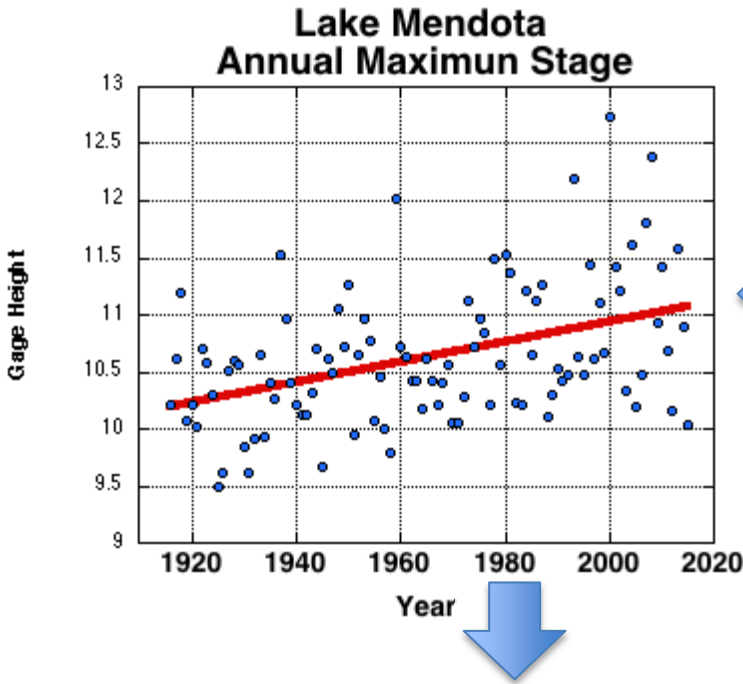
Department of Civil & Environmental Engineering

**Research In Retirement**  
**Research**  **Practice**

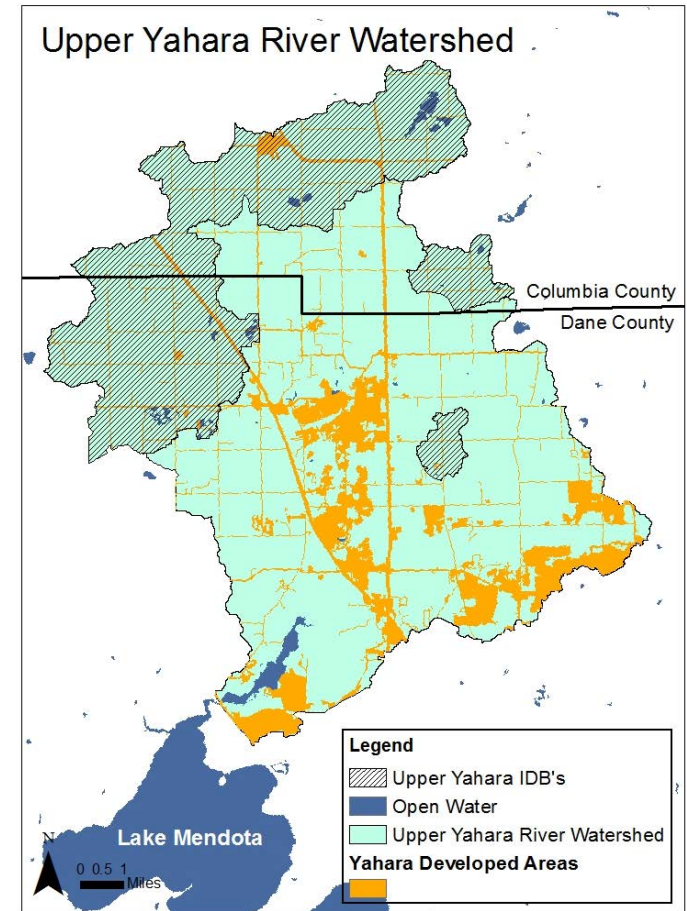
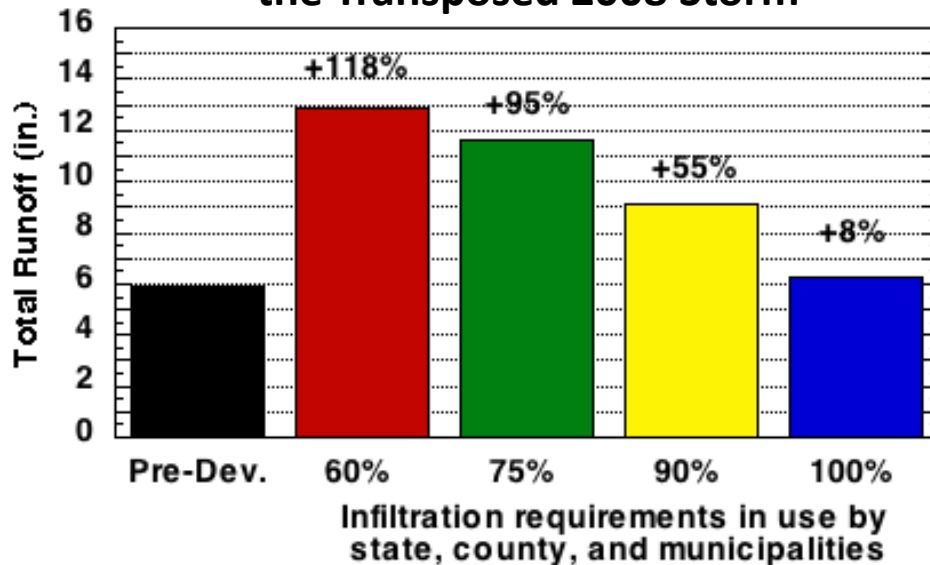
# Challenges

Flooding in the Yahara Lakes will become much worse in the future because:

- Severe storms will continue to increase in magnitude and frequency
- Current stormwater ordinances are not sufficiently protective.



Modeled Percentage Increases in Runoff for Various Infiltration Requirements Based on the Transposed 2008 Storm



# Opportunities

**Brook trout will persist much longer in Driftless Area streams because:**

- Baseflow per unit drainage area is much larger, especially in the summer.
- Baseflow begins much higher in the watershed.
- Concentrated flows (springs) are more common, and hence provide refugia.
- Stratigraphy and absence of glacial till explains advantageous flow conditions.
- But thoughtful management will be required.

