

Emily Stanley
Center for Limnology
Department of Zoology

Aquatic biogeochemistry- C, N, and P dynamics in streams and rivers
(and reservoirs and lakes and sometimes also wetlands)



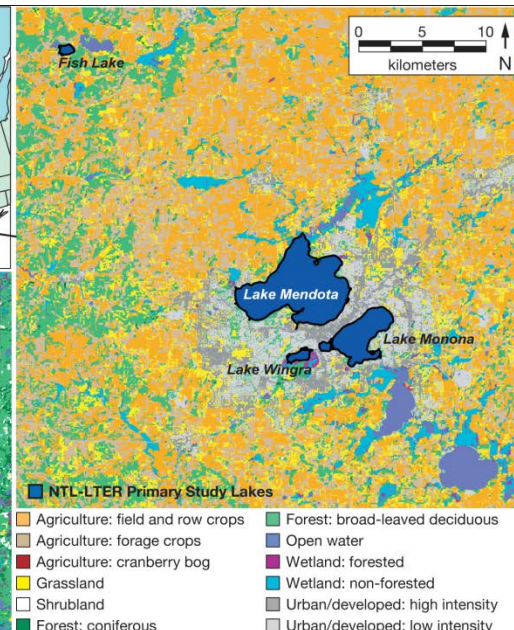
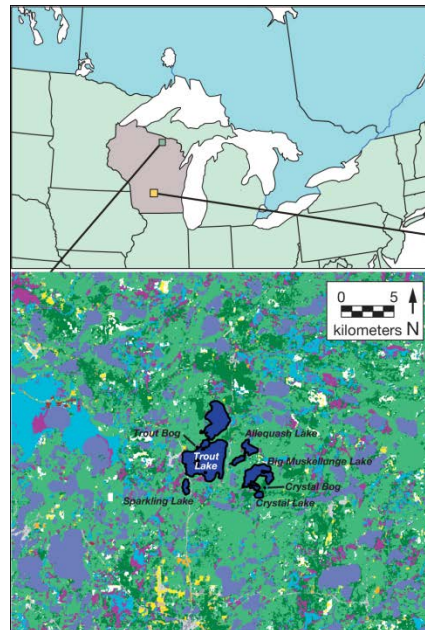
North Temperate Lakes Long Term Ecological Research Program



North Temperate Lakes LTER

How do climate, social-ecological interactions, land use and cover, and ecological processes act in concert to shape the past, present, and future of lake districts?

Northern Highlands
Lakes District
(NHLD)



Yahara
Lakes District
(YLD)

- Long-term investigation of:
 - 7 lakes in the NHLD since 1986
 - 4+ lakes in YLD since 2000
 - Mendota, Monona, Wingra, Fish
- Comparative studies
- Whole-ecosystem experiments
- Modeling and synthesis
- Outreach and education



- Context and a LOT of easily and freely accessible data for research

<http://lter.limnology.wisc.edu>

The screenshot shows the homepage of the North Temperate Lakes Long Term Ecological Research (NTL-LTER) website. The browser address bar displays <https://lter.limnology.wisc.edu>. The main header features a banner image of a lake with the text "North Temperate Lakes Long Term Ecological Research" and "Member of the US LTER Network". A navigation menu includes links for "About", "Data", "Research", "Publications", "People", "Outreach", "LTERArts", and "Links". Below the menu is a search bar with a dropdown menu set to "-Any-" and a "Search" button. The main content area is titled "Welcome to NTL-LTER" and includes a map of the study sites in Wisconsin, with labels for the "Trout Lake Region" and "Madison Lakes Region". To the right of the map, text describes the research focus: "North Temperate Lakes Long Term Ecological Research studies the ecology of lakes as one of a network of sites established by the National Science Foundation. We are interested in how biophysical setting, climate, and changing land use and cover interact to shape lake characteristics and dynamics over time (past, present, future). Our primary study sites include a set of seven northern Wisconsin and four southern Wisconsin lakes and their surrounding landscapes. The project, which started in 1981, is administered by the Center for Limnology at the University of Wisconsin-Madison." Below this text is a list of research topics: "Perception of Long-Term Change: How and why have the lake districts changed, and how will they change in the future?", "Climatic Forcing of Change: What are the major ecological and social responses of lake districts to climate change?", "Interacting Drivers, Scales of Space and Time, and Regional Change: How do multiple interacting drivers affect regional change in lake districts at multiple scales?", and "Ecosystem Services: Past, Present and Future: What are the magnitudes, interactions and potential future flows of ecosystem services in lake districts?". On the right side of the page, there are sections for "News" (with a link to "Once Upon A Lake..."), "Research Highlights" (with a link to "Ice Phenology and Climate Change"), and a "Calendar" for the month of May.